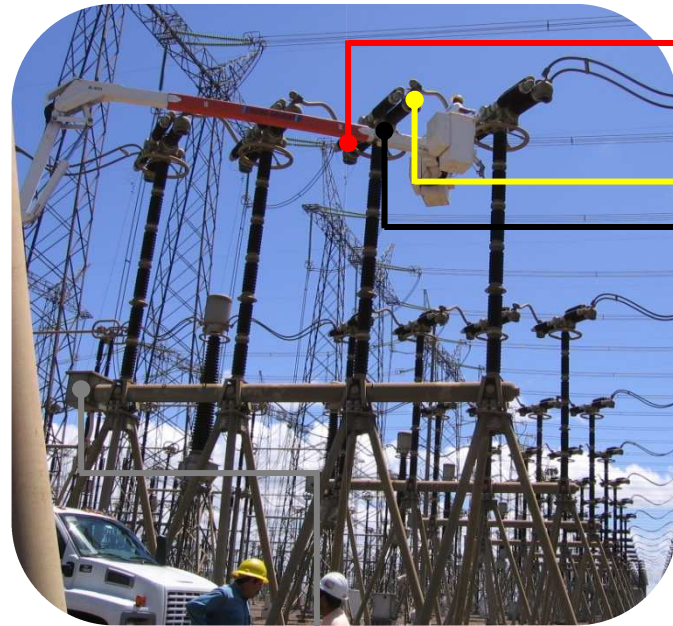


24 CONTACTS CIRCUIT BREAKER



**CONT-N-10-B
x12**



**EXT-CONT-N
x12**



**TRANSDUCER (ZLT, ZOT, ZRT)
+ BASE (ZLB, ZLR, ZMS)**



EXT-CONT-N



COM-N-35



**CAB-ALIM
100-240 VAC
0-60Hz**

100 - 240 VAC / 50-60 Hz



GND-25



CBA Win®

CBA-32P-24C



**FIB-MOD-
100-240V**



FIB