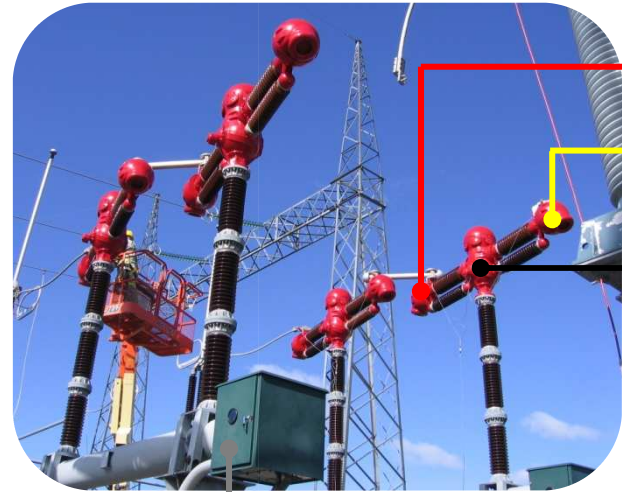


# 12 CONTACTS CIRCUIT BREAKER



**CONT-N-10-B**  
x8



**EXT-CONT-N**  
x8



**TRANSDUCER (ZLT, ZOT, ZRT)**  
+ **BASE (ZLB, ZLR, ZMS)**



**EXT-CONT-N**



**COM-N-35**



**CAB-ALIM**  
100-240 VAC  
0-60Hz

100 - 240 VAC / 50-60 Hz

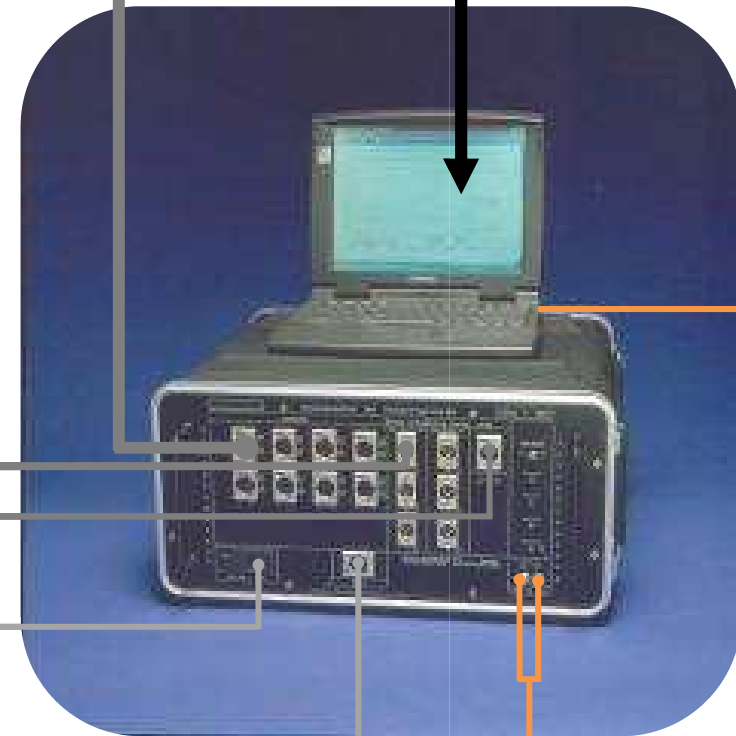


**GND-25**



**CBA Win®**

**CBA-32P-16C**



**FIB-MOD-100-240V**



**FIB**